

Taking Command of CUNY+/Aleph500, Part 1:

Using Aleph's Common Command Language (CCL) to gather statistical counts on library resources by format, collection, sub-library, etc. (excluding volume/item count); Doing some Collection assessment and troubleshooting

Prepared by

Michael Wood
Hostos Community College Library

**Presented at the LACUNY Acquisitions Roundtable's
Spring Meeting, June 11, 2003**

Table of Contents

CCL Abbreviations	4
WOW= to search by OWN field (see appendix for full list)	4
WSL= to search by Sub-Library (see appendix for full list)	5
WCL= to search by Collection.....	5
WFM= to search by format	6
WFS= to search by secondary format.....	6
WYR= to search by Year of Publication	7
WLN= to search by Language	7
Other CCL abbreviations you can use for statistics	7
Boolean Searching	8
Filter Options.....	8
Truncation	9
Cross searching with sets.....	9
Collection Development	9
Troubleshooting	10
Appendix	10
WOW= to search by OWN field	10
WSL= to search by Sub-Library	11

Aleph Common Command Language (CCL) can be use either in the Public Catalog (Web OPAC) or the staff GUI OPAC. I recommend that you restrict statistical searches to your local/base catalog.

Records that have a status of SUPPRESSED and/or DELETED will and should not appear in your results.

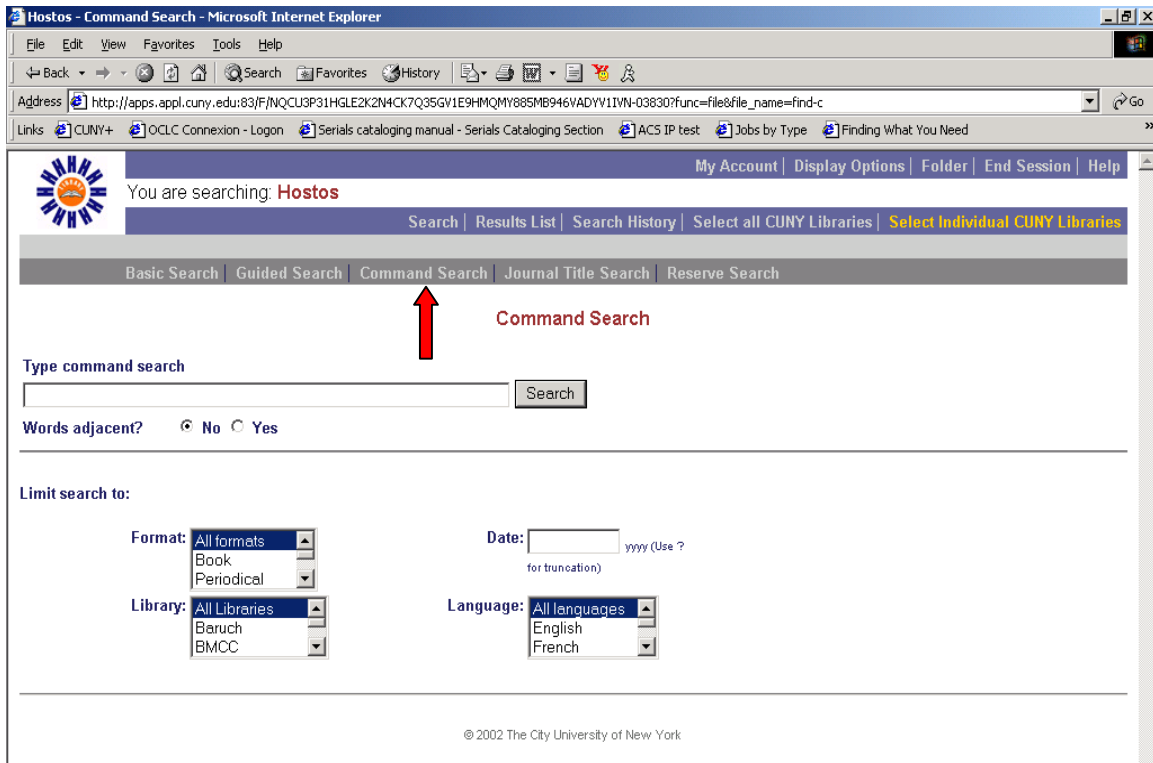
The CCL abbreviations are used to search specific fields in CUNY+/Aleph records for controlled codes, numbers or regular words in fields (regular words are not need for statistics unless you wanted to very specific, for example on particular subject).

CCL abbreviations can also be combined using Boolean logic (i.e., "and" "or" "not").

Note: WSL (sub-library), WOW (OWN), and WCL (Collection) are unique for your library and the examples provided below are unique for Hostos Community College. In many cases, collection codes are similar among the various colleges.

Note: Some of your search results will not be sort and in some case you will be able to sort by title, etc. (I believe results that are not sorted are arranged in record number order?)

Note: When searching CCL in the Web OPAC, Ignore the search limits at the bottom of the screen.



CCL Abbreviations

The following CCL abbreviations can be used for gathering statistical counts.

WOW= to search by OWN field (see appendix for full list)

- HO** Hostos Community College
- CC** City College
- BX** Bronx Community College
- AL** All CUNY Libraries (records are scoped to all local catalogs/bases)

Example: WOW=HO AND WFM=BK to search for book format own by Hostos.

Note: if WOW is not included, your search will also retrieve AL (CUNY) resources. Another example of this search in your local catalog (Web or GUI) is

WFM=BK not WOW=AL

WSL= to search by Sub-Library (see appendix for full list)

- HO001** Hostos
- HORSV** Hostos Reserve
- CC001** City College

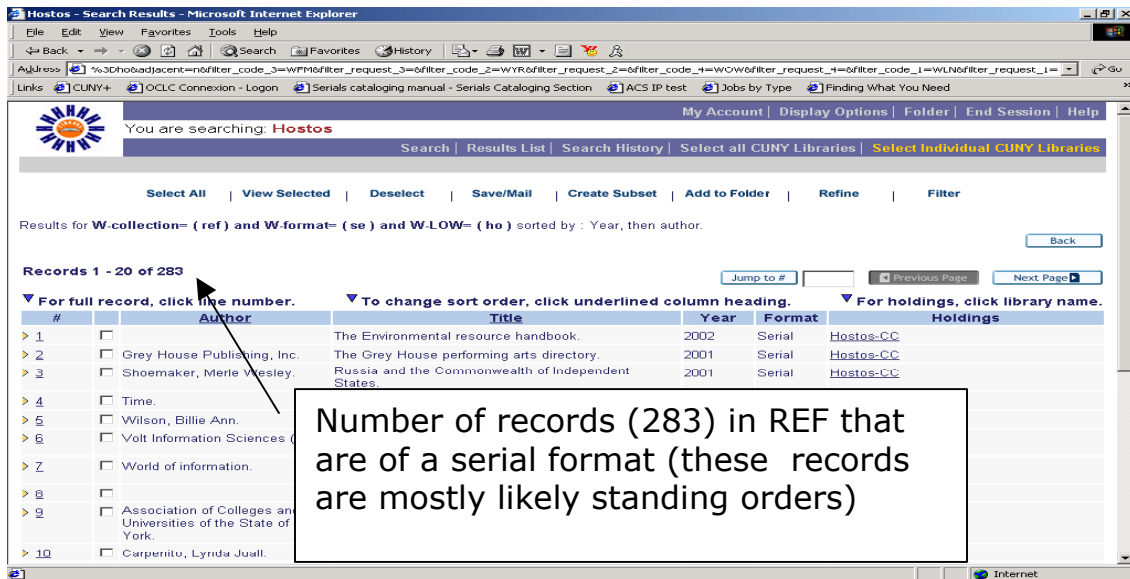
Example: WSL=HORSV to search for and display all titles on Reserve.

Note1: If a Sub-Library was change temporarily, the record will not be displayed under that sub-library. For example, an item was taken from the stacks and then placed on reserve (the temporary location box should be checked off). This may also apply to collections.

WCL= to search by Collection

- REF** Reference
- PER** Periodicals
- STACK** Stacks
- RESE** Reserve
- JUV** Juvenile Collection

Example: WCL=REF AND WFM=SE AND WOW=HO to search for Reference resources in the Reference Collection that are in a book (bk) format and are own by Hostos.



In this search, for example, I can assess the currency of the items attached each of these records. The year column does not necessarily reflect the currency because these are serial records and the date/year is based on the opening/starting date of the publication

WFM= to search by format

BK books
CF computer file
MP maps
MU music
SE serials
VM visual materials
MS mixed materials

Example: WFM=se AND WOW=HO to search for a Serial format records owned by Hostos.

WFS= to search by secondary format

WFS points to marc tag 006, which contains the code for secondary format codes/characteristics. This would include for example, a serial that is electronic (i.e., computer file). In addition, this also includes materials that are accompanied by resources in another format such as a book with a CD-ROM or Diskette.

a Printed language material
t Manuscript language material
m Computer file
e Cartographic material
f Manuscript cartographic material
c Printed music
d Manuscript music
i Nonmusical sound recording
j Musical sound recording
s Serial
t Manuscript language material
g Projected medium
k Two dimensional nonprojectable graphic
o Kit
r Three-dimensional artifact or naturally occurring object
p Mixed material

Example: WFS=m AND WFM=se not WOW=AL to search for a Serial formats that are also in electronic/computer file secondary format and not owned by AL (i.e., CUNY Resource)

WYR= to search by Year of Publication

WYR searches 008 Date 1 and 260 Sub-field c

Example: **WYR=2001**

Example: **WYR=200? or 1999**

WLN= to search by Language

eng English
fre French
heb Hebrew
ita Italian
spa Spanish

Example: **wln=spa and wyr=200? and wow=ho**

For complete list of language codes available, see the Library of Congress site at <http://lcweb.loc.gov/marc/languages/>

Other CCL abbreviations you can use for statistics

Call Numbers

LOC (LC Call number) or
SHL (LC Shelf List) or
PST (All Call numbers)
OTH (Other Call numbers) 852 8_
SUD (SuDOC)

LOC, SHL and PST appears to be equivalent.

Example: **LOC=QA76.5 and WCL=REF**

Example: **LOC=QA76? and WCL=REF**

Note: Call numbers works well with ? after the call number.

Note: RT41 (will find any item with just RT41) and RT41? Will find all RT41s

Subjects

SUB (Subject Browse)

WSU (Subject Keyword)

For additional CCL abbreviations, use the help screen on CUNY+ Web OPAC

Boolean Searching

You may use the Boolean operators AND, OR, and NOT in your search string. In addition, more than one operator may appear in the search string. For example, you could type **WFS=m AND WFM=se not WOW=AL** to search for a Serial formats that are also in electronic/computer file secondary format and not owned by AL (i.e., CUNY Resources available to all libraries)

AND indicates that all terms must be in a record.

OR indicates that any of the terms may be present.

NOT indicates that one or more terms should be excluded.

Whenever you use **OR** with either **AND** or **NOT** or both that you must place the terms joined by **OR** in parentheses.

wyr=(199? or 2000)

Filter Options

- New items (added within the last 60 days)
- Created since date
- Range of years item was created

Truncation

Either the question mark (?) or the asterisk (*) may be used to retrieve results for several forms of a word or number. For example, *200?* will find records containing *2000, 2001, 2002, and 2003, etc.*

wyr=(199? or 2000)

Cross searching with sets

Collection Development

CCL abbreviations are excellent for collection development purposes. Collection Development librarians, subject bibliographers, or liaisons to departments can browse the entire collection or a specific collection (e.g., REF) to see how many titles in a particular subject area or as well as evaluate the currency of the items

For examples:

WOW=HO and WCL=REF and WSU=Nursing

If you want to search by call number, I recommend doing a Basic Search.

Comparative studies: I wanted to see what NYC Tech. has in its collection on the subject of Radiologic technology compared with Hostos.

WOW=(HO or NY) and WSU=Radiologic Technology.

Troubleshooting

Troubleshooting can be done in the local/base or union cataloging depending on the information you would like to find.

For example, you would like to find out if your staff attached holdings/items to another school. Your search must be done in the Union catalog.

I wanted to find holdings that are QC but are not owned by QC, it must be searched the union catalog.

wsl = (qc001) not wow = (qc)

Another example, I wanted to find all records that do not have a holdings and perhaps no items (I call these floating records), I would do a search in the Hostos catalog to exclude all my collection codes

wow=ho not wcl=stack not wcl=juv not wcl=per not wcl=ref not wcl=av not wcl=arch not wcl=rese

Appendix

WOW= to search by OWN field

AL	All CUNY Libraries**	KB	Kingsborough
BB	Baruch	LG	LaGuardia
BH	CUNY Central	CL	Law School
BM	BMCC	LE	Lehman
BX	Bronx CC	ME	Medgar Evers
BC	Brooklyn	NY	NYC College of Tech.
CC	City	QC	Queens
CP	Centro at Hunter	QB	Queensborough
GC	Grad. Center	SI	Staten Island
HO	Hostos CC	YO	York
HC	Hunter		
JJ	John Jay		

****Note:** AL records are scoped to all local catalogs/bases

WSL= to search by Sub-Library

AL001	CUNY
BB001	Baruch
BBMED	Baruch Media
BBPER	Baruch Periodicals
BBRSV	Baruch Reserve
BC001	Brooklyn
BCMUS	Brooklyn Music
BCRSV	Brooklyn Reserve
BH001	CUNY Central
BM001	Borough of Manhattan CC
BX001	Bronx CC
BXLCT	Bronx CC Learning Ctr.
BXRSV	Bronx CC Reserve
CC001	City College
CCARC	City College Architecture
CCMUS	City College Music
CCRSV	City College Reserve
CCSCI	City College Science
CL001	CUNY Law
CP001	Centro at Hunter
GC001	Grad. Center
HC001	Hunter
HCHPL	Hunter Health Professions
HCRSV	Hunter Reserve
HCSWK	Hunter Social Work
HO001	Hostos CC
HORSV	Hostos CC Reserve
JJ001	John Jay
JJRSV	John Jay Reserve
KB001	Kingsborough
LE001	Lehman
LEFAL	Lehman Fine Arts
LERSV	Lehman Reserve
LG001	LaGuardia
LGMED	LaGuardia Media
ME001	Medgar Evers
NY001	NYC College of Technology

QB001	Queensborough
QBHOL	Queensborough Holocaust Center
QBREF	Queensborough Reference
QBRSV	Queensborough Reserve
QC001	Queens
QCMED	Queens Media
QCMUS	Queens Music
QCRSV	Queens Reserve
SI001	Staten Island
YO001	York

**Sub-library searches are conducted in the holdings record
(CUN60/Marc tag 852\$\$b)**